



3606 East Tower, 3 Pan Peninsula Square, London, E14
9HQ

 2  2  1  C

Available Now!

Spacious two double bedroom apartment on a high floor and located in the prestigious Pan Peninsula building. Comprising two double bedrooms, two bathrooms, open plan reception / dining and located few moments from the heart of London's fastest growing business district, Pan Peninsula is incredibly well connected with direct access to South Quay DLR station, 5 minutes to Canary Wharf Underground Station and Crossrail (The Elizabeth Line). Residents enjoy a luxury city lifestyle as they immerse themselves in what Pan Peninsula has to offer, providing fantastic facilities including a state-of-the-art gym, a swimming pool, screening room and 24 hr Concierge Service.

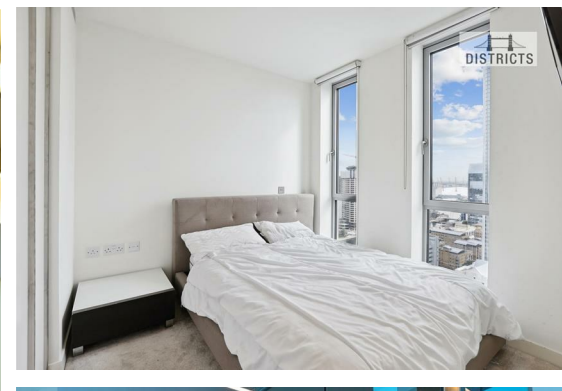
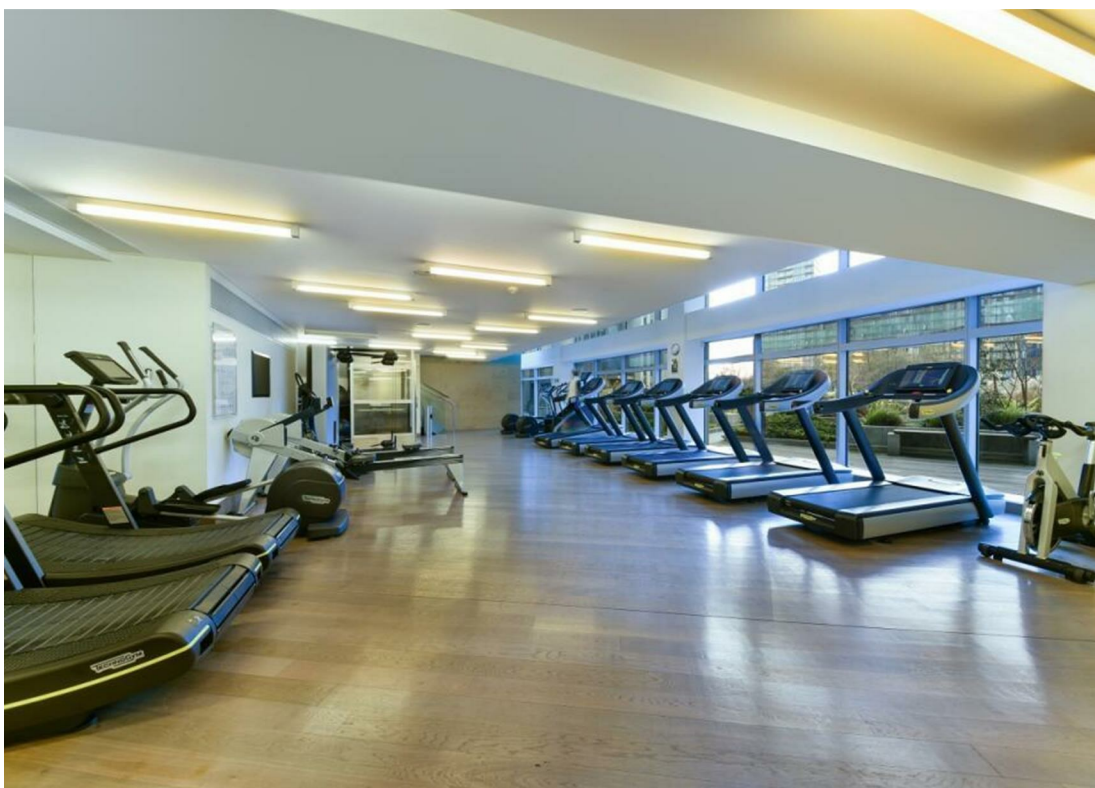
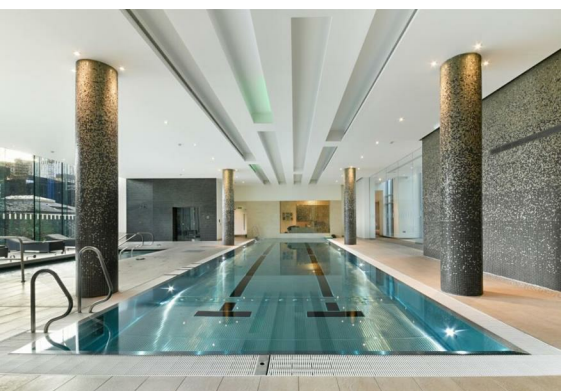
Great Views | Comfort Cooling | Bright Interiors | Contemporary Finish | Residents' Gym | 24 Hour Concierge | Variety of Restaurants | Spacious | Smart Fitted Kitchen | Fitted Wardrobes

Council Tax Band: Tower Hamlets, G
Minimum contract: 12 months
Change of contract fee: £50 including VAT
Holding Deposit - £703 (1 weeks rent, subject to agreed offer)

Electricity supply – Mains | Cold Water supply – Mains | Sewerage – Mains | Hot water, heating & comfort cooling – Communal | Internet: Ftpp | Lift access

To check broadband and mobile phone coverage please visit Ofcom.
To check planning permission please visit Tower Hamlets Council Website, Planning & Building Control.





Approximate Gross Internal Area
75.34 sq m / 811 sq ft

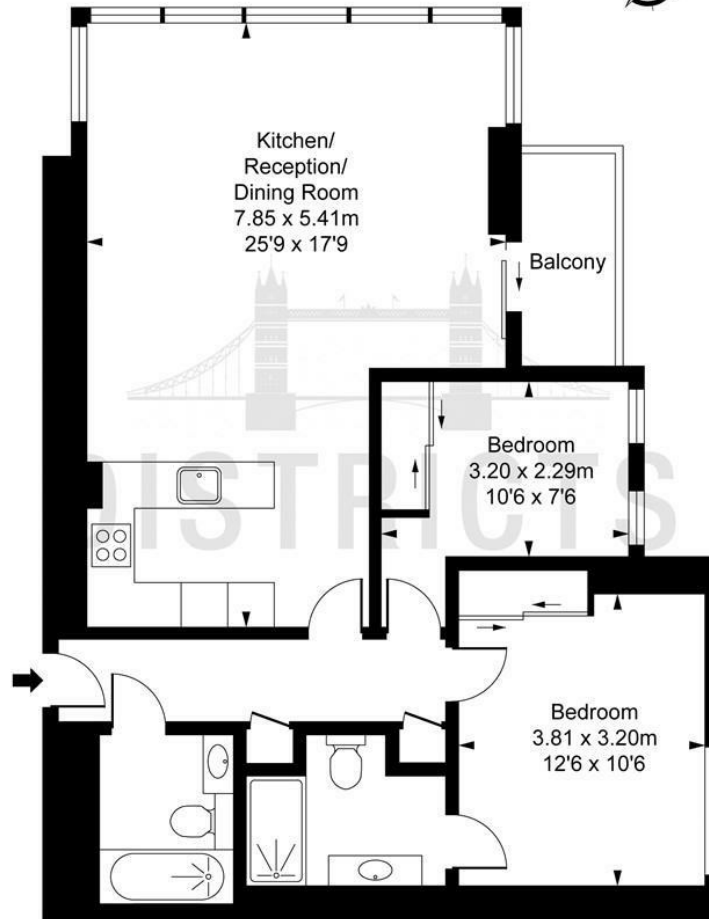


ILLUSTRATION FOR IDENTIFICATION PURPOSES ONLY
ALL MEASUREMENTS AND AREA FIGURES SUPPLIED BY OTHERS. ACCURACY IS NOT GUARANTEED.
THIS PLAN MUST NOT BE REPRODUCED BY ANY OTHER PERSON WITHOUT PERMISSION

Energy Efficiency Rating		Current	Potential
Very energy efficient - lower running costs			
(92 plus) A			
(81-91) B			
(69-80) C		74	76
(55-68) D			
(39-54) E			
(21-38) F			
(1-20) G			
Not energy efficient - higher running costs			
England & Wales		EU Directive 2002/91/EC	

These particulars, whilst believed to be accurate are set out as a general outline only for guidance and do not constitute any part of an offer or contract. Intending purchasers should not rely on them as statements of representation of fact, but must satisfy themselves by inspection or otherwise as to their accuracy. No person in this firm's employment has the authority to make or give any representation or warranty in respect of the property.